

# VANDERLOC

## 30" Single Bath Vanity Kiawah KWS1-30

### Features

- Inset look with UV-coated plywood cabinet interior
- 2" square posts on all four corners
- Full height doors with soft close Blum® 110° hinges
- Conversion Varnish finish
- 2" useable shelf below the vanity cabinet
- Hardware size 8-13/16" center to center
- Top and faucet sold separately
- Plumbing rough in area cut-out detailed on page 2
- Made in the US

### Material

- Solid wood, combination core veneers, and medium density fiberboard.
- Wood is a living material, and its beauty is enhanced by natural variations in grain, color, and pattern.
- No two pieces of wood are exactly the same, and the color will change with age, temperature, and exposure to light.
- The nature of wood grain can cause variations in stain depth. Our expert craftsmen apply paints and stains in a specific sequence to eliminate these variations.

### Installation

- Bath Vanity
- Professional Installation Only

### Included Products

- Decorative door hardware
- Door bumpers

### Optional Products

- C-31-SRC.WS Silestone® Quartz Countertop
- C-31-SRC.SH Silestone® Quartz Countertop
- C-31-SRC.NH Silestone® Quartz Countertop
- C-31B Bath Vanity Top Backsplash

### Codes/Standards

- EPA TSCA Title VI
- CARB P2

### Vanderloc® One-Year Limited Warranty



Image displaying a 36" vanity in French Olive with Satin Gold hardware. Countertop and faucet not included




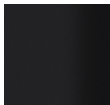
### Available Paint & Hardware Finishes

Color tiles intended for reference only.

#### Paint Finishes

	<b>.fo</b> French Olive		<b>.pg</b> Platinum Gray
	<b>.hb</b> Hague Blue		<b>.pw</b> Pure White
	<b>.no</b> Noir		<b>.sw</b> Strong White
	<b>.ob</b> Off Black		<b>.tt</b> Taos Taupe

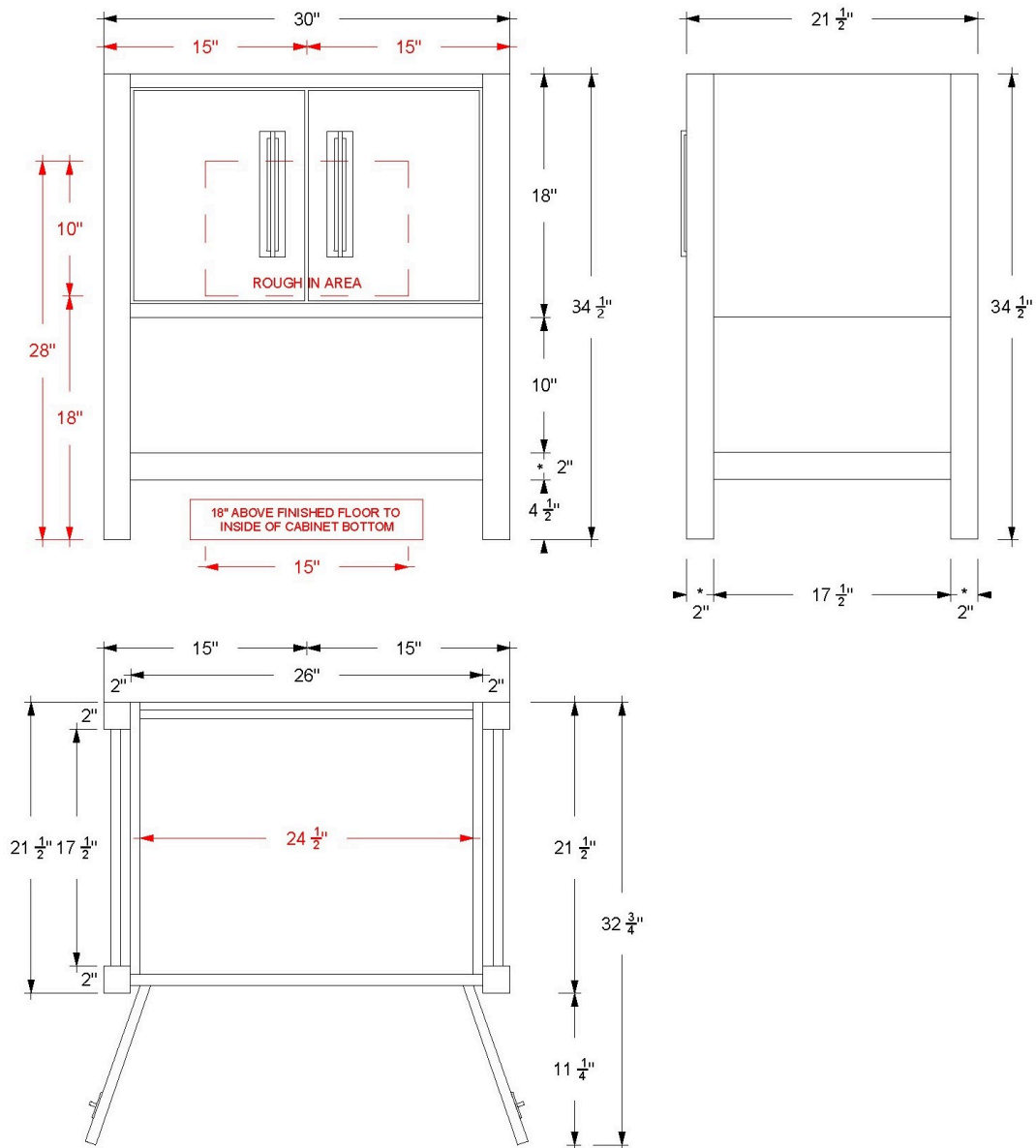
#### Hardware

	<b>.ch</b> Polished Chrome
	<b>.sg</b> Satin Gold
	<b>.sn</b> Satin Nickel
	<b>.mb</b> Matte Black



# VANDERLOC

## 30" Single Bath Vanity Kiawah KWS1-30



### Technical Information

All product dimensions are nominal.

- Installation: Bath Vanity
- Number of doors: 2

### Notes

Install this product according to the installation instructions.



# VANDERLOC

## 36" Single Bath Vanity Kiawah KWS1-36

### Features

- Inset look with UV-coated plywood cabinet interior
- 2" square posts on all four corners
- Full height doors with soft close Blum® 110° hinges
- Conversion Varnish finish
- 2" useable shelf below the vanity cabinet
- Hardware size 8-13/16" center to center
- Top and faucet sold separately
- Plumbing rough in area cut-out detailed on page 2
- Made in the US

### Material

- Solid wood, combination core veneers, and medium density fiberboard.
- Wood is a living material, and its beauty is enhanced by natural variations in grain, color, and pattern.
- No two pieces of wood are exactly the same, and the color will change with age, temperature, and exposure to light.
- The nature of wood grain can cause variations in stain depth. Our expert craftsmen apply paints and stains in a specific sequence to eliminate these variations.

### Installation

- Bath Vanity
- Professional Installation Only

### Included Products

- Decorative door hardware
- Door bumpers

### Optional Products

- C-37-SRC.WS Silestone® Quartz Countertop
- C-37-SRC.SH Silestone® Quartz Countertop
- C-37-SRC.NH Silestone® Quartz Countertop
- C-37B Bath Vanity Top Backsplash

### Codes/Standards

- EPA TSCA Title VI
- CARB P2

### Vanderloc® One-Year Limited Warranty



Image displaying a 36" vanity in French Olive with Satin Gold hardware. Countertop and faucet not included




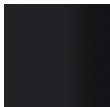
### Available Paint & Hardware Finishes

Color tiles intended for reference only.

#### Paint Finishes

	<b>.fo</b> French Olive		<b>.pg</b> Platinum Gray
	<b>.hb</b> Hague Blue		<b>.pw</b> Pure White
	<b>.no</b> Noir		<b>.sw</b> Strong White
	<b>.ob</b> Off Black		<b>.tt</b> Taos Taupe

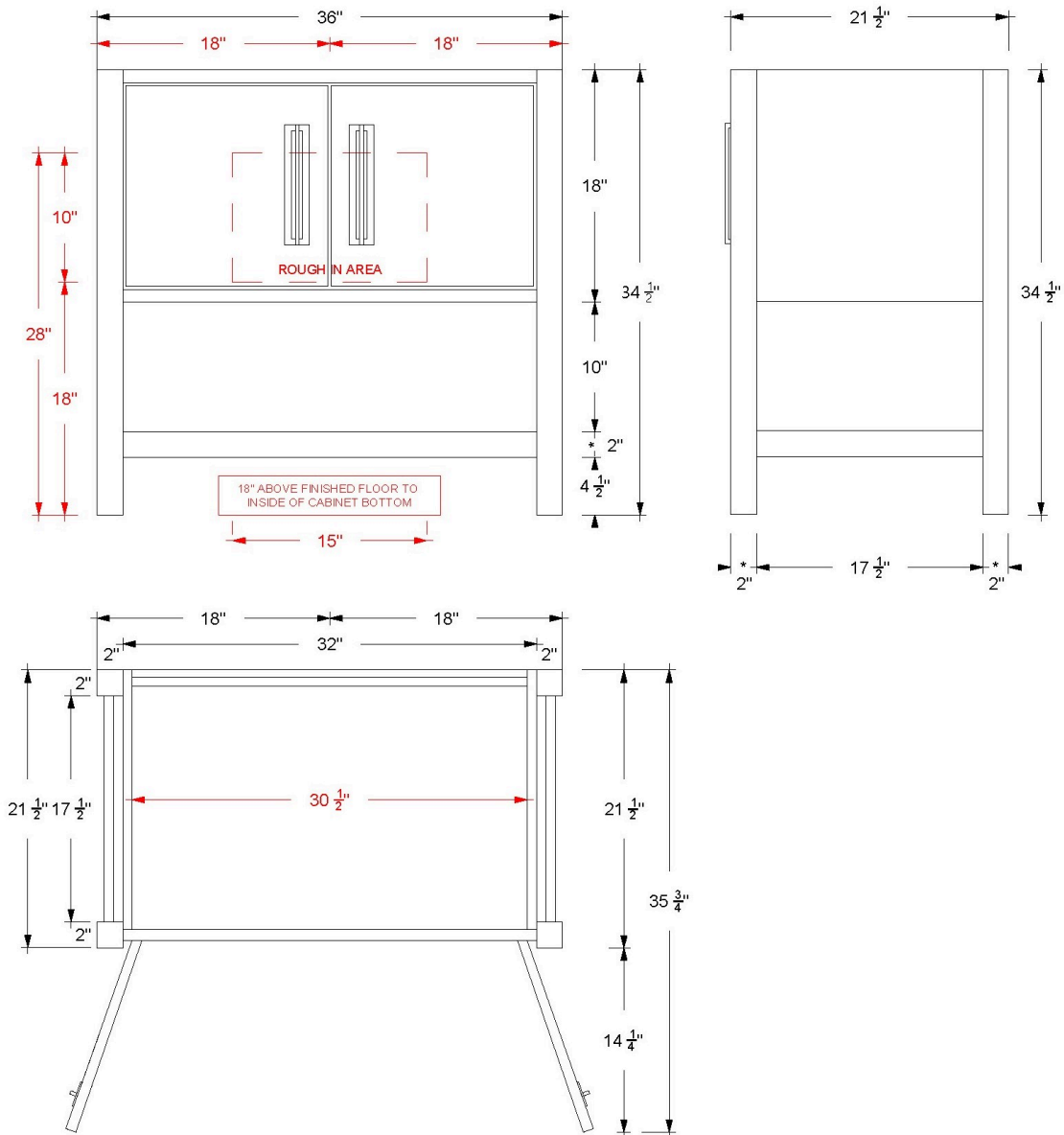
#### Hardware

	<b>.ch</b> Polished Chrome
	<b>.sg</b> Satin Gold
	<b>.sn</b> Satin Nickel
	<b>.mb</b> Matte Black



# VANDERLOC

## 36" Single Bath Vanity Kiawah KWS1-36



### Technical Information

All product dimensions are nominal.

- Installation: Bath Vanity
- Number of doors: 2

### Notes

Install this product according to the installation instructions.



# VANDERLOC

## 42" Single Bath Vanity Kiawah KWS1-42

### Features

- Inset look with UV-coated plywood cabinet interior
- 2" square posts on all four corners
- Full height doors with soft close Blum® 110° hinges
- Conversion Varnish finish
- 2" useable shelf below the vanity cabinet
- Hardware size 8-13/16" center to center
- Top and faucet sold separately
- Plumbing rough in area cut-out detailed on page 2
- Made in the US

### Material

- Solid wood, combination core veneers, and medium density fiberboard.
- Wood is a living material, and its beauty is enhanced by natural variations in grain, color, and pattern.
- No two pieces of wood are exactly the same, and the color will change with age, temperature, and exposure to light.
- The nature of wood grain can cause variations in stain depth. Our expert craftsmen apply paints and stains in a specific sequence to eliminate these variations.

### Installation

- Bath Vanity
- Professional Installation Only

### Included Products

- Decorative door hardware
- Door bumpers

### Optional Products

- C-43-SRC.WS Silestone® Quartz Countertop
- C-43-SRC.SH Silestone® Quartz Countertop
- C-43-SRC.NH Silestone® Quartz Countertop
- C-43B Bath Vanity Top Backsplash

### Codes/Standards

- EPA TSCA Title VI
- CARB P2

### Vanderloc® One-Year Limited Warranty



Image displaying a 36" vanity in French Olive with Satin Gold hardware. Countertop and faucet not included




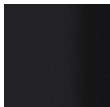
### Available Paint & Hardware Finishes

Color tiles intended for reference only.

#### Paint Finishes

	<b>.fo</b> French Olive		<b>.pg</b> Platinum Gray
	<b>.hb</b> Hague Blue		<b>.pw</b> Pure White
	<b>.no</b> Noir		<b>.sw</b> Strong White
	<b>.ob</b> Off Black		<b>.tt</b> Taos Taupe

#### Hardware

	<b>.ch</b> Polished Chrome
	<b>.sg</b> Satin Gold
	<b>.sn</b> Satin Nickel
	<b>.mb</b> Matte Black



# VANDERLOC

## 48" Single Bath Vanity Kiawah KWS1-48

### Features

- Inset look with UV-coated plywood cabinet interior
- 2" square posts on all four corners
- Full height doors with soft close Blum® 110° hinges
- Conversion Varnish finish
- 2" useable shelf below the vanity cabinet
- Hardware size 8-13/16" center to center
- Top and faucet sold separately
- Plumbing rough in area cut-out detailed on page 2
- Made in the US

### Material

- Solid wood, combination core veneers, and medium density fiberboard.
- Wood is a living material, and its beauty is enhanced by natural variations in grain, color, and pattern.
- No two pieces of wood are exactly the same, and the color will change with age, temperature, and exposure to light.
- The nature of wood grain can cause variations in stain depth. Our expert craftsmen apply paints and stains in a specific sequence to eliminate these variations.

### Installation

- Bath Vanity
- Professional Installation Only

### Included Products

- Decorative door hardware
- Door bumpers

### Optional Products

- C-49-SRC.WS Silestone® Quartz Countertop
- C-49-SRC.SH Silestone® Quartz Countertop
- C-49-SRC.NH Silestone® Quartz Countertop
- C-49B Bath Vanity Top Backsplash

### Codes/Standards

- EPA TSCA Title VI
- CARB P2

### Vanderloc® One-Year Limited Warranty



Image displaying a 36" vanity in French Olive with Satin Gold hardware. Countertop and faucet not included



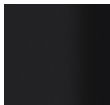
### Available Paint & Hardware Finishes

Color tiles intended for reference only.

#### Paint Finishes

	<b>.fo</b> French Olive		<b>.pg</b> Platinum Gray
	<b>.hb</b> Hague Blue		<b>.pw</b> Pure White
	<b>.no</b> Noir		<b>.sw</b> Strong White
	<b>.ob</b> Off Black		<b>.tt</b> Taos Taupe

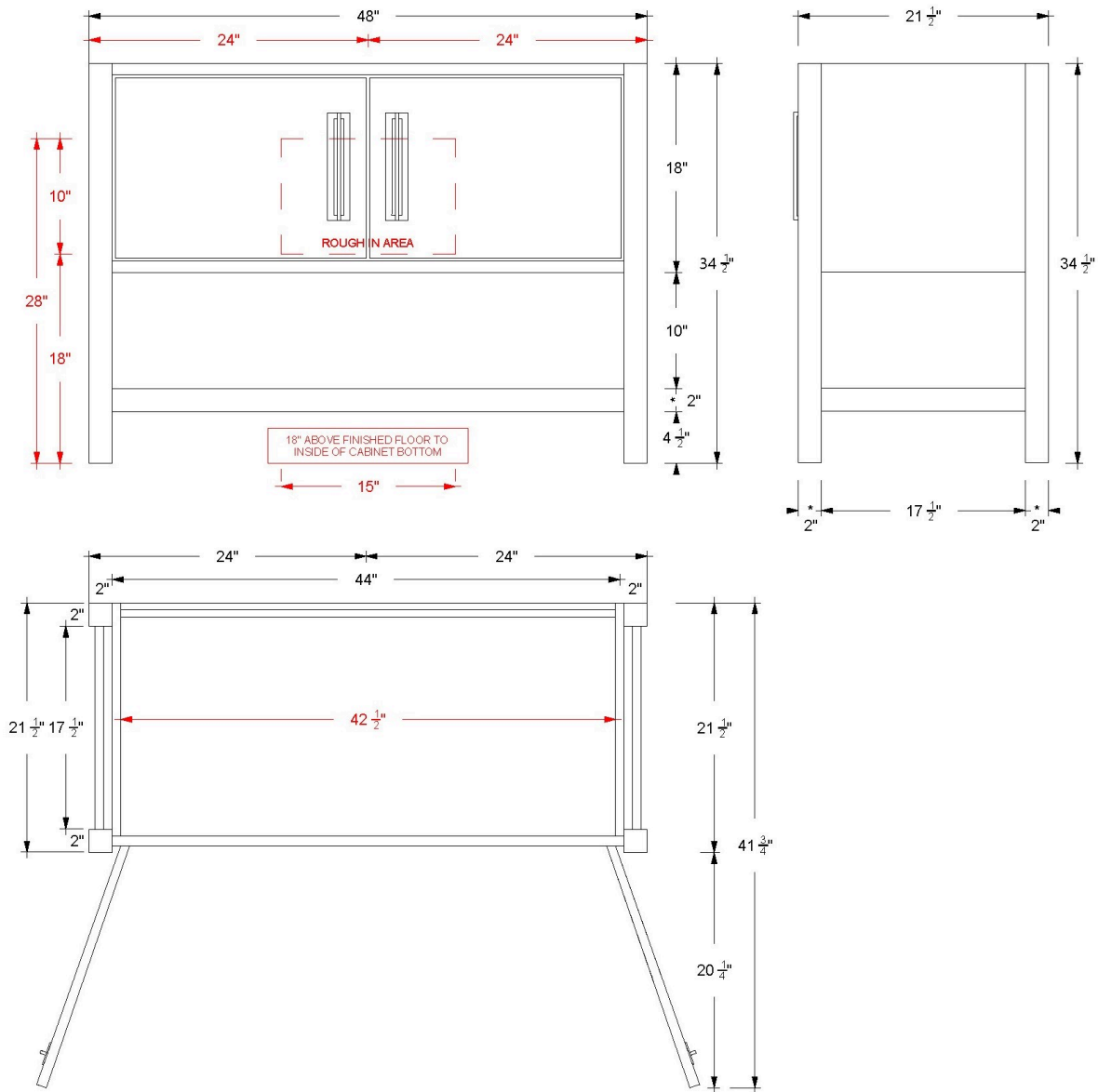
#### Hardware

	<b>.ch</b> Polished Chrome
	<b>.sg</b> Satin Gold
	<b>.sn</b> Satin Nickel
	<b>.mb</b> Matte Black



# VANDERLOC

## 48" Single Bath Vanity Kiawah KWS1-48



### Technical Information

All product dimensions are nominal.

- Installation: Bath Vanity
- Number of doors: 2

### Notes

Install this product according to the installation instructions.

Vanderloc® reserves the right to make revisions without notice to product specifications. For the most current Specification Sheet, go to [www.vanderloc.com](http://www.vanderloc.com)

