

VANDERLOC Ventura Two-Drawer Single Bath Floating Vanity With Integrated Countertop

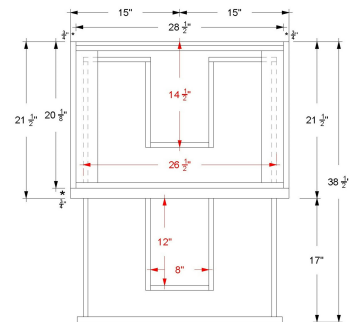
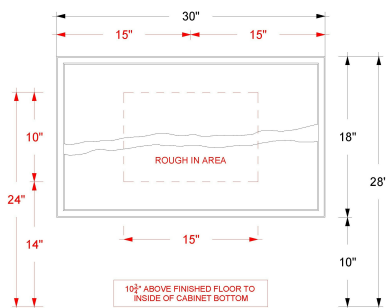
FEATURES

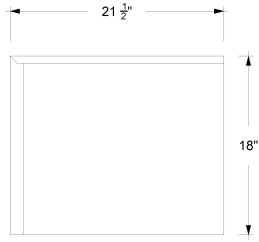
- Inset construction with UV-coated plywood cabinet interior
- Live Edge Drawer detail
- 3/4" Angled Frame
- 2 u-shaped fully functional softclose drawers
- Conversion Varnish finish
- French cleat mounting design for assisting with installation
- No Decorative Hardware
- Integrated Wood Top (No boring operations available)
- Sink and faucet sold separately
- Plumbing rough in area cut-out
- Made in the US

MATERIAL

- Solid wood and White Oak plywood.
- Wood is a living material, and its beauty is enhanced by natural variations in grain, color, and pattern.
- No two pieces of wood are exactly the same, and the color will change with age, temperature, and exposure to light.
- The nature of wood grain can cause variations in stain depth. Our expert craftsmen apply paints and stains in a specific sequence to eliminate these variations.

TECHNICAL DRAWINGS





Manufacturer Suggested Mounting Height
Verify Local Building Code